



Personal floor scale KERN MPS

Professional personal floor scale with BMI function – with EC type approval class III and approval for professional medical use in medical diagnostics

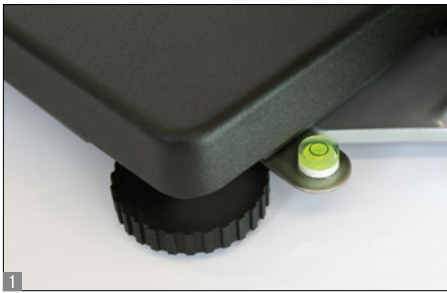
A TESTOR
www.atestor.hu



KERN MPS-PM
with stand



KERN MPS-M
with free-standing
display device



Features

- Verification class III (verification is optional)
- Approved as a medical device according to 93/42/EEC
- Thanks to its compact dimensions and the good price/performance ratio, this range is ideally suited for use in treatment rooms in doctor's surgeries and hospitals
- Ergonomic display device with large numerical keypad and high-contrast LCD display for easy entry and reading of patient data, such as, for example, the height for calculating the BMI
- Sturdy steel weighing plate with a non-slip and wear-resistant surface
- Easy and hygienic cleaning
- **1** Secure and non-slip positioning with height-adjustable rubber feet
- **1** Level indicator to level the balance precisely
- Hold function:
When patients do not stand completely still, a stable weight is calculated using an average weight and this is then "frozen". This means that you have sufficient time to attend to the patient first and then read the weight

- BMI function to determine underweight/normal weight/surplus weight
- **2** Wall mount for display device, standard
- Battery- or mains-powered, rechargeable battery operation optional
- Protective working cover included in delivery

Technical data

- LCD display, digit height 25 mm
- Dimensions of weighing plate W×D×H 275×295×58 mm
- Dimensions of display device W×D×H 210×110×50 mm
- Only MPS-PM:
Overall dimensions (incl. stand) W×D×H 275×460×1015 mm
- Cable length of display device (only for models without a stand) approx. 120 cm
- Battery operation possible, 6×1,5 V AA, not included, operating time up to 50 h
- Mains adapter external, standard
- Data interface RS-232 standard
- Net weight MPS-M approx. 4.8 kg, MPS-PM approx. 6 kg

Accessories

- **3** Mechanical height rod, measuring range: 60–205 cm, can be screwed onto the column from the front or the back (MPS-PM) or wall-mounted, approved as a medical device according to 93/42/EEC, KERN MSF 200, **€ 99,-**
- Protective working cover over the display device, scope of delivery: 5 items, KERN EOB-A02S05, **€ 40,-**
- Cleaning cloths, alcohol-free cleaning cloths for wipe disinfection. Fulfill the legal requirements for occupational safety in accordance with TRGS 525/540. Packaging contents 80 pcs., size 20×22 cm per cloth, KERN MYC-01, **€ 55,-**
- Internal rechargeable battery pack, operating time up to 35 h, charging time approx. 24 h, KERN FOB-A08, **€ 60,-**
- Interface cable RS-232 to connect an external device, KERN MPS-A08, **€ 46,-**
- Matrix needle printer, KERN YKN-01, **€ 260,-**
- Label printer, KERN YKE-01, **€ 620,-**
- Thermal printer, KERN YKB-01N, **€ 310,-**
- For further details, plenty of further accessories and suitable printers see Internet

STANDARD					OPTION	FACTORY
RS 232	MOVE	BATT	MULTI	1 DAY	ACCU	M +3 DAYS

* Within the EU, official verification is mandatory by law for scales that are intended for use as a medical device. Please add this to your order. We require the location of use and the post code for the verification.

Model	Weighing range [Max] kg	Readability [d] kg	Verification value [e] kg	Price excl. of VAT ex works €	Mandatory by law Verification	
					KERN	€
KERN						
MPS 200K 100M	200	0,1	0,1	405,-	965-129	56,-
MPS 200K 100PM	200	0,1	0,1	640,-	965-129	56,-